

# Care Services at Passavant Community: Nursing, Personal Care and Adult Day

*Experience Your Abundant Life®*



  
Lutheran  
SeniorLife  

---

Passavant  
Community

[www.lutheranseniorlife.org](http://www.lutheranseniorlife.org)



# Lutheran SeniorLife Passavant Community

*Lutheran SeniorLife Passavant Community is a flourishing community of 500 residents, long recognized for excellence and compassionate care. Founded in 1905, Passavant has grown into a continuing care retirement community (CCRC) where residents transition to the level of care they need, from residential living to personal care or skilled nursing care, and now adult day services, as well.*



## **What is Personal Care?**

Personal Care at Passavant Community consists of services for older adults whose needs may range from companionship and three good meals each day to those who need assistance throughout the day, or perhaps assistance with medications and reminders to get to programming they enjoy. Personal care is a licensed setting in the state of Pennsylvania, but we meet and exceed what is required of a personal care home.

## **What is Nursing Care?**

Nursing Care at Passavant Community is focused on assisting individuals with clinical and therapeutic interventions so they may regain optimal health and the quality of life they deserve.

## **What are Adult Day Services?**

My Day Out is a licensed adult day services center that provides opportunities for socialization, fitness and wellness programs, meaningful engagement and assistance with personal care. Both half-day and full-day programs are available, Monday through Friday.

## **Our Campus**

Passavant Community's 42-acre campus is modern, picturesque, and within walking distance of historic Zelenople with shopping and dining amenities in town. Personal Care residents have access to the regularly

scheduled bus service around the Passavant Campus and also through the town of Zelenople for a variety of programs and shopping on an hourly basis, Monday through Friday. Also, we regularly schedule outside trips for off-campus activities, such as dinners, museum trips, shows or shopping.

Passavant is a community where aging is celebrated as a time for living fully as well as a time for growth. As a certified PersonFirst® community, residents' voices are heard and important in making decisions about their daily life.

This is a community that residents truly call home, where they can age and go through transitions of senior living in one familiar place. It is a place to grow and discover, develop new relationships and deepen old ones; a place that provides empowerment as well as peace of mind, a place to live an **Abundant Life®**.

All aspects of our residents' lives are considered, not just their health care. Passavant's community life affirms the six dimensions of wellness: vocational; physical; social; intellectual; spiritual; creative. These dimensions of wellness are evident everywhere – in the buildings, on the grounds, within the many services and opportunities for **Abundant Life®**.



# Designed for the future...Building on the Past

*Passavant's community life affirms the six dimensions of wellness:  
vocational; physical; social; intellectual; spiritual; creative.*



**Newhaven Court** is a 20+ year old, Victorian style building designed to enhance social interaction for residents who need personal care. They receive three meals daily, housekeeping service weekly, laundry services and medication assistance. Caregivers and community life staff provide programming opportunities inside the building, and residents are also welcome at other community events in our Abundant Life Center.

Newhaven Court is composed of 17 neighborhoods, with 4 to 6 private apartments sharing a common "neighborhood room." Each private apartment includes a kitchenette area to enhance the resident's independence and the fullness of life's possibilities. Also, the apartments include a living area and a wheelchair accessible private bath with walk-in shower.

Newhaven Court also houses a dining room, open for restaurant style dining three meals each day. An "always available" menu enhances the choices available to the residents, in addition to the daily specials for lunch and dinner from our chefs. Meals are served by our staff, and assistance is provided as needed.

Newhaven Court also includes:

- A community room, housing church services, art classes, fitness offerings, music or entertainment
- A library, including a lovely two-sided gas fireplace to be enjoyed from the library or the lobby
- A beautiful communal lobby area, complete with baby grand piano and lovely sitting areas
- A large covered portico – a favorite seating area for our residents after lunch in the summer
- A beauty salon, for both ladies and gents
- Round the clock, trained and awake caregivers
- Outpatient physical therapy area
- Balconies and patios from many of the neighborhood areas, for gardening and enjoying fresh air
- Raised gardens and a lovely outdoor walking path
- Personal response system monitored on campus
- A respite apartment that may be available for up to 30 days of temporary care

## **The Abundant Life Center**

The new Abundant Life Center is the heart of campus activity, and houses 34 personal care apartments on two floors and nursing care households accommodating up to 102 residents on three floors.

## **Personal Care Households**

- Two households:
  - *Blue Ridge* – 18 apartments, (2<sup>nd</sup> floor) – general Personal Care
  - *Shenandoah* – 16 apartments (3<sup>rd</sup> floor) – memory support Personal Care
- European showers (fully accessible, no barriers) in private bathrooms
- Walk-in closets
- Assistance with daily living needs, such as bathing and dressing
- Meals prepared by staff in kitchen, with accessible countertop for interaction and a beverage/snack area. Gluten free, dairy free and low sugar diets can be accommodated, and a staff dietitian is available for consultations.
- Lovely living room, TV room, library and sitting nooks throughout
- Interior porch entrance to each household
- Community room, sun porch and outside deck with rooftop garden on each household
- Personal laundry done individually in the household
- A spa for those who need whirlpool bathing

## **Personal care in both Newhaven Court and the Abundant Life Center also includes:**

- Medication administration

- Weekly housekeeping services
- Social service assistance
- Personal response system
- Community Life programming
- Spiritual support services
- Light bulb replacement
- Window coverings
- Scheduled transportation
- Picture hanging first 30 days
- 24 hour supervision and security
- Weekly Laundry and bed changing
- Reminders of programs and meals
- Building and grounds maintenance
- Utilities, including basic cable TV (Armstrong) and local telephone
- Personalized fitness assessment and wellness programs
- Scheduling of medical and other health care appointments
- Minimal assistance with Activities of Daily Living (set up and preparation for bathing, dressing, grooming)
- Additional levels of care, as needed:
  - Personal care plus – \$25/day additional
  - Enhanced Personal Care Plus – \$33/day additional
- Contractual guaranty – once admitted, resident will not be asked to leave for want of money, as long as they don't artificially impoverish themselves.

An assessment will be provided prior to resident's admission to help determine the appropriate level of care for the resident's needs. Additional information is available.



# Designed for the future...Building on the Past

## Adult Day Care

Adult day care is a licensed level of care in the state of Pennsylvania, and is designed to provide socialization, fitness and wellness programs, purposeful engagement and also personal care services (showering, shaving, hair washing) for those who require it. It is not a long term housing arrangement, but rather a half or full day enrichment program to assist those with physical or cognitive limitations, while providing a break from caregiving for those who live with or near the participant. The adult day care is called **My Day Out**, and it is located on the second floor of the Abundant Life Center, conveniently close to the heart of the campus for visits to the library, the fitness center, the medical clinic or the beauty parlor.



## Nursing Care

Nursing Care is licensed by the state of Pennsylvania, and offers skilled temporary accommodations and long term care. In our person-centered approach to nursing

we address the whole person, not just their clinical or therapeutic needs. So, our chaplaincy program is active, the meal program is flexible, we have staff members devoted to life enrichment opportunities, and the households are designed for comfort and engagement.

## Nursing Households

- Six households of 17 residents each:
  - Memory support households:*  
Allegheny and Larkspur (third floor)
  - Short stay/skilled households:*  
Tionesta and Trillium (second floor)
  - Long term care:*  
Brandywine and Mountain Laurel (first floor)
- Private rooms with one semi-private suite on each floor, with built in curios and lovely residential style lighting
- European showers (fully accessible, no barriers) in private bathrooms
- 24-hour support provided for short-stay and long-term residents
- Consistent, Lutheran SeniorLife employees provide occupational, physical and speech therapies
- Community Life staff to help foster socialization and participation in household programming and events
- Each household creates its own atmosphere, in their family and living areas, dining room and kitchen
- Interaction between household staff and residents encouraged during meal preparation. Meals prepared by staff in kitchen, with accessible countertop for



- interaction and a beverage/snack area. Gluten free, dairy free and low sugar diets can be accommodated, and a staff dietitian is available for consultations.
- Outdoor porches accessible and secured so residents can go outdoors on their own, with a view of the nursing courtyard
- Personal laundry service in the households
- Spa Suite on each floor for those who require or prefer whirlpool bathing.
- Expert nursing care and collaboration with therapy and other disciplines to do our best to facilitate swift recovery after a health event or scheduled surgery, whenever possible.
- Insurance companies we contract with: Aetna US Healthcare, Cigna Health Insurance, Health America, including Advantra, Highmark Blue Cross Blue Shield Plans including Security Blue, LIFE Pittsburgh, Butler, Beaver, Lawrence and Armstrong Counties, Medicare, Medicaid, TRICARE, UPMC Health Plan

## Therapy at Passavant Community

Lutheran SeniorLife Passavant Community has its own dedicated therapists in occupational, physical and speech therapies. We are licensed for both in patient therapy and outpatient therapy, with two convenient outpatient offices on the campus, in Newhaven Court and the Abundant Life Center!

## The Clinic

To help facilitate resident interactions with physicians, both generalists and specialists, Butler Health System has assisted us in outfitting a medical clinic in the Abundant Life Center to allow visits without leaving the campus. Multiple physicians, a dentist, x-ray services, and various specialty groups (podiatry, audiology, optometry) keep office hours at various times in the clinic. A number of the physicians and specialists also round through the nursing households and even personal care.

*We invite you to visit our beautiful community, to schedule a skilled stay after a required surgery, or for the private personal care needs of yourself or a loved one in one of our personal care settings, or for daily outings twice a week in My Day Out.*

*We would be delighted to show you our possibilities.*

# Personal Care, Newhaven Court

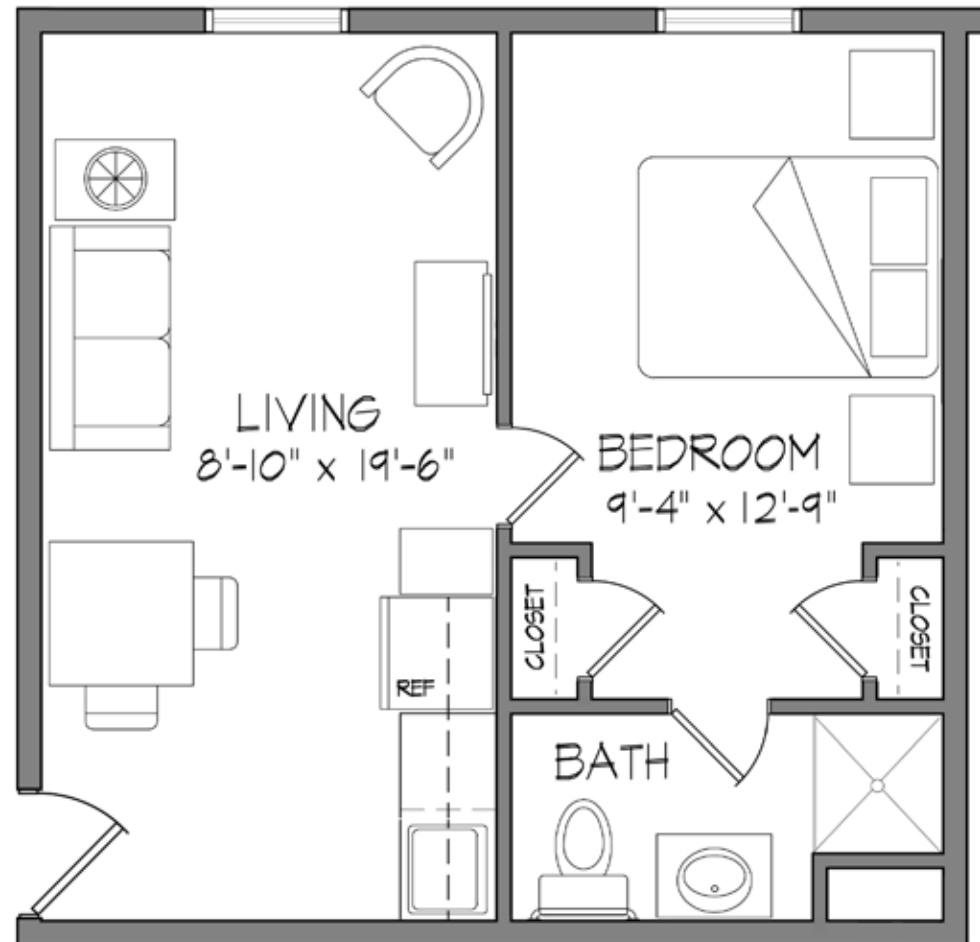
Pricing effective July 1, 2015

The Newhaven Court building houses 92 apartments, in 6 different sizes. However, there is rarely if ever availability of any but our largest apartments, as our existing residents get priority over those from the outside. So, the following three sizes are what we advertise to the public.

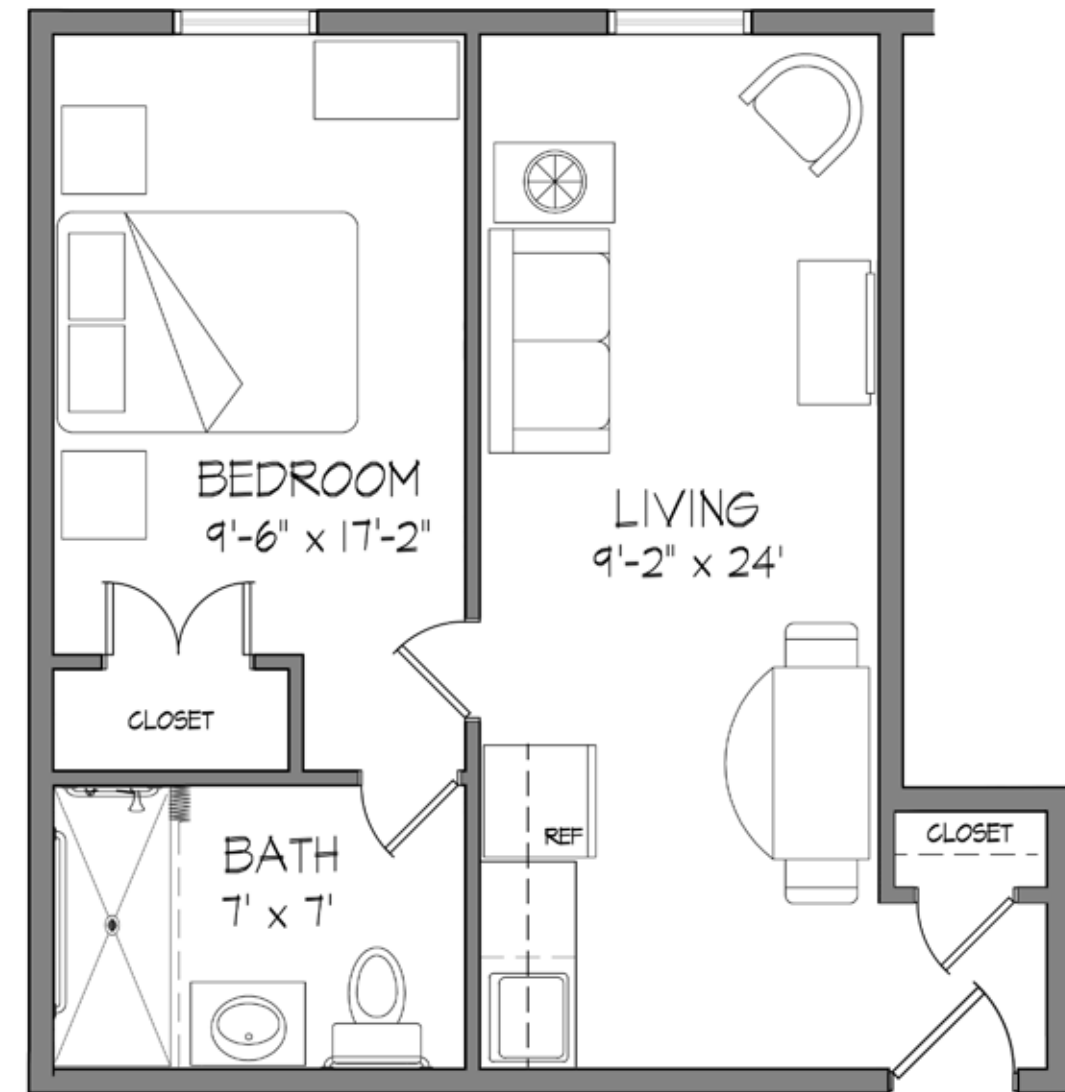
Respite care may be available.

- \$170/day
- no entrance fee
- 30 day limit

**TWO ROOM STANDARD**



**TWO ROOM DELUXE**



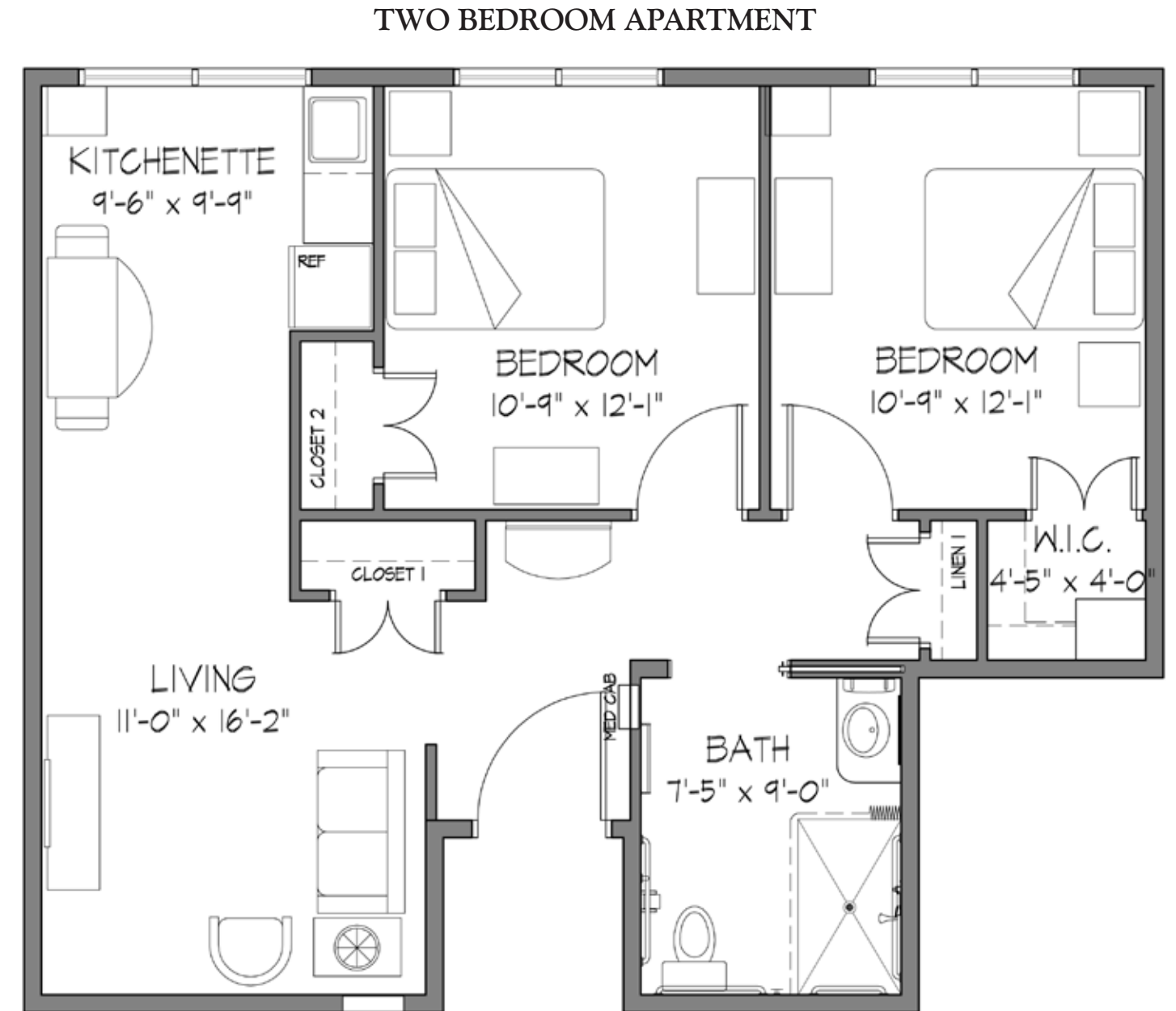
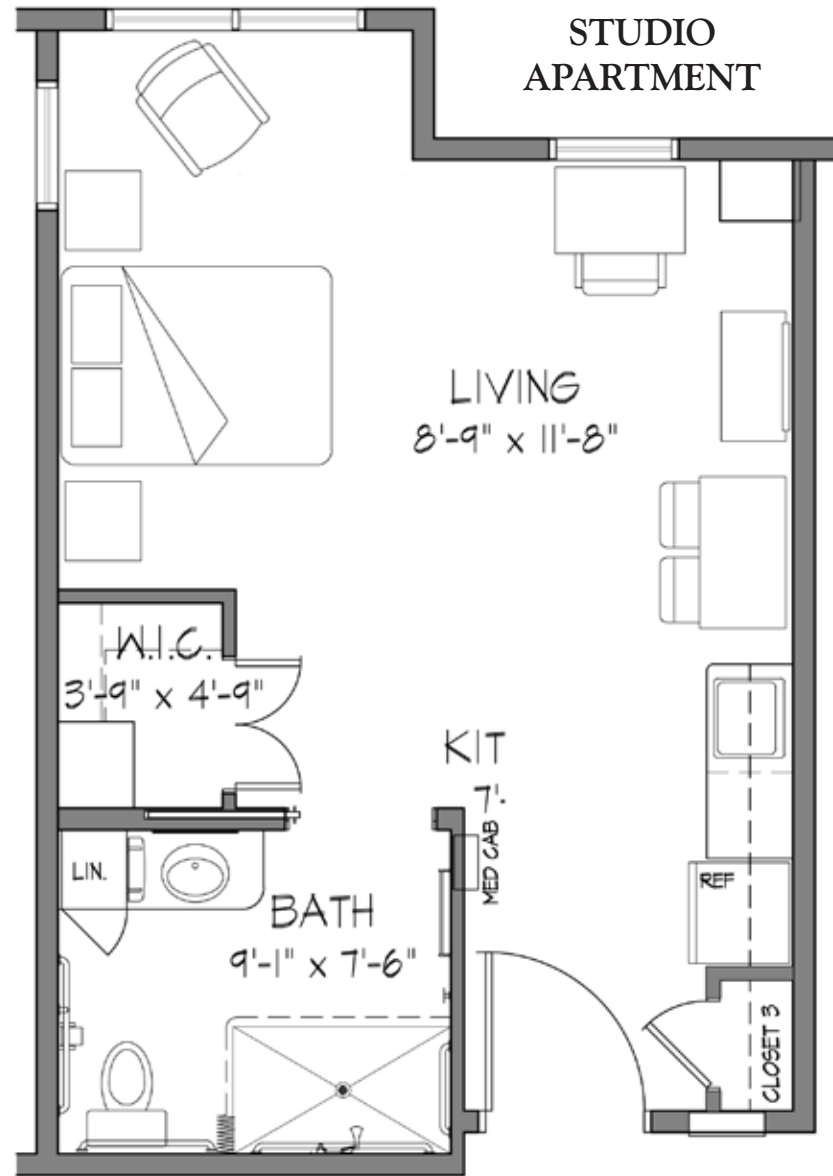
SIZE	Two Room Standard	Two Room Deluxe	Extra Large	Second Person Fee
MONTHLY FEE	\$4414	\$5046	\$5250	\$1700
ONE TIME NON-REFUNDABLE ENTRANCE FEE*	\$11,000	\$11,000	\$11,000	\$5,500

\* This non-refundable, one time entrance fee helps us pay for the capital required to fully renovate apartments for move-in, as well as help us pay for those who have outlived their resources. Remember, if you outlive your savings through no fault of your own, we do NOT ask residents to leave for want of money!



Pricing effective July 1, 2015

Blue Ridge is a lovely grouping of 18 apartments sharing gracious living spaces, a large porch, a fully functioning kitchen and private apartments in three sizes. Blue Ridge houses our only two bedroom apartments in personal care, designed for couples who love their spouses, but perhaps not their sleeping schedule!



SIZE	Studio	Studio Deluxe	Two Bedroom	Second Person Fee
MONTHLY FEE	\$4624	\$4834	\$5543	\$1700
ONE TIME NON-REFUNDABLE ENTRANCE FEE*	\$11,000	\$11,000	\$11,000	\$5,500

\* This non-refundable, one time entrance fee helps us pay for the capital required to fully renovate apartments for move-in, as well as help us pay for those who have outlived their resources. Remember, if you outlive your savings through no fault of your own, we do NOT ask residents to leave for want of money!

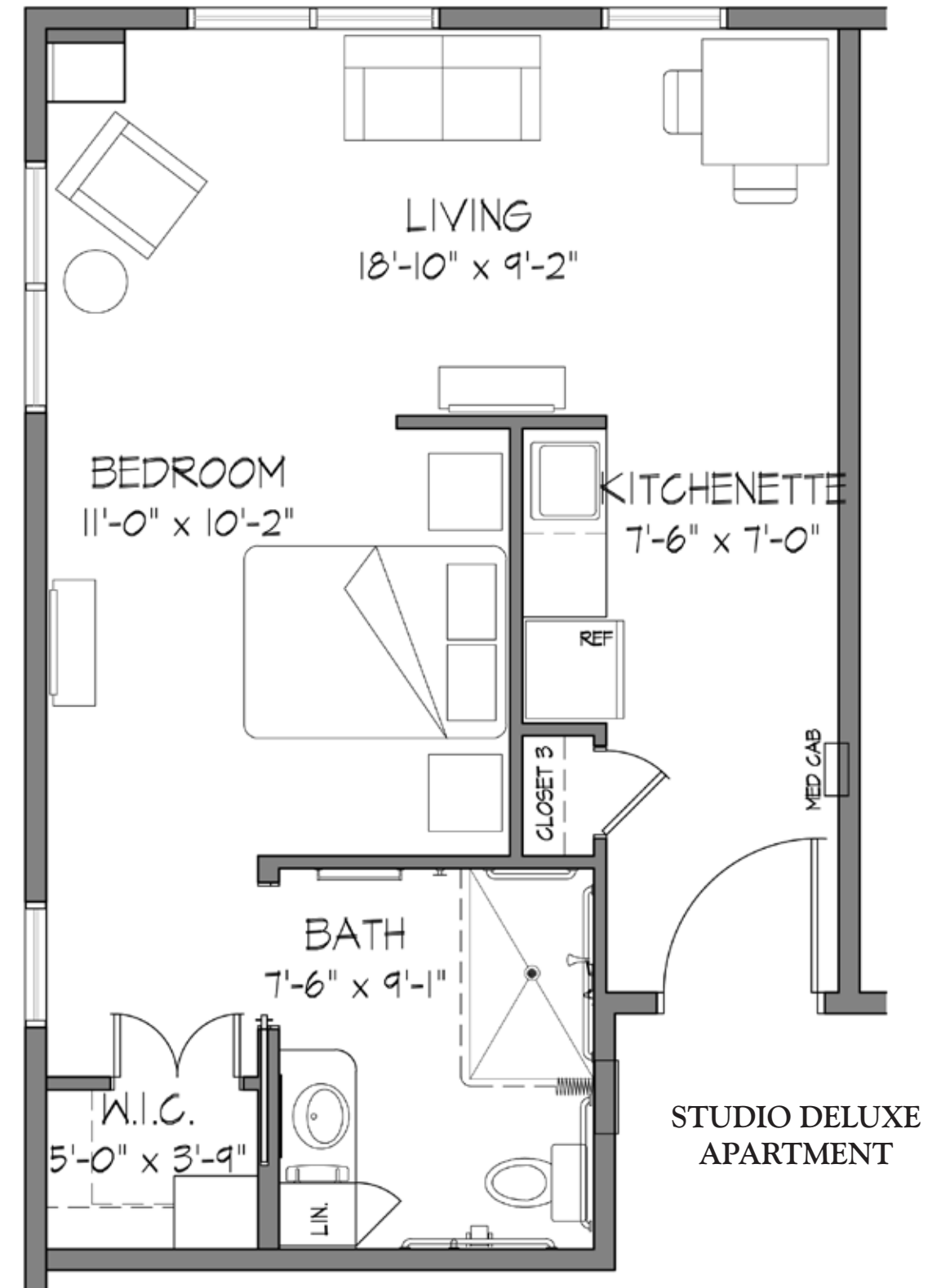
# Personal Care, Abundant Life Center

# Shenandoah Household

Pricing effective July 1, 2015

Shenandoah Household is a vibrant community of 16 apartments on the third floor of the Abundant Life Center, removed from the hustle and bustle of Main Street. The location in the building is designed to help keep safe those who may be exit seeking or confused by new people or situations. Person-centered supports are designed to help residents with cognitive impairments maximize their enjoyment of life, and engage them in a smaller environment, while still having the freedom to enjoy the living room, TV room, community programming rooms, indoor and outdoor porches, sitting nooks and kitchen.

SIZE	Studio	Studio Deluxe	Second Person Fee
MONTHLY FEE	\$5522	\$5674	\$1700
ONE TIME NON-REFUNDABLE ENTRANCE FEE*	\$11,000	\$11,000	\$5,500



\* This non-refundable, one time entrance fee helps us pay for the capital required to fully renovate apartments for move-in, as well as help us pay for those who have outlived their resources. Remember, if you outlive your savings through no fault of your own, we do NOT ask residents to leave for want of money!

# Nursing Care, Abundant Life Center

We have 96 private rooms and 3 semi-private suites in nursing.

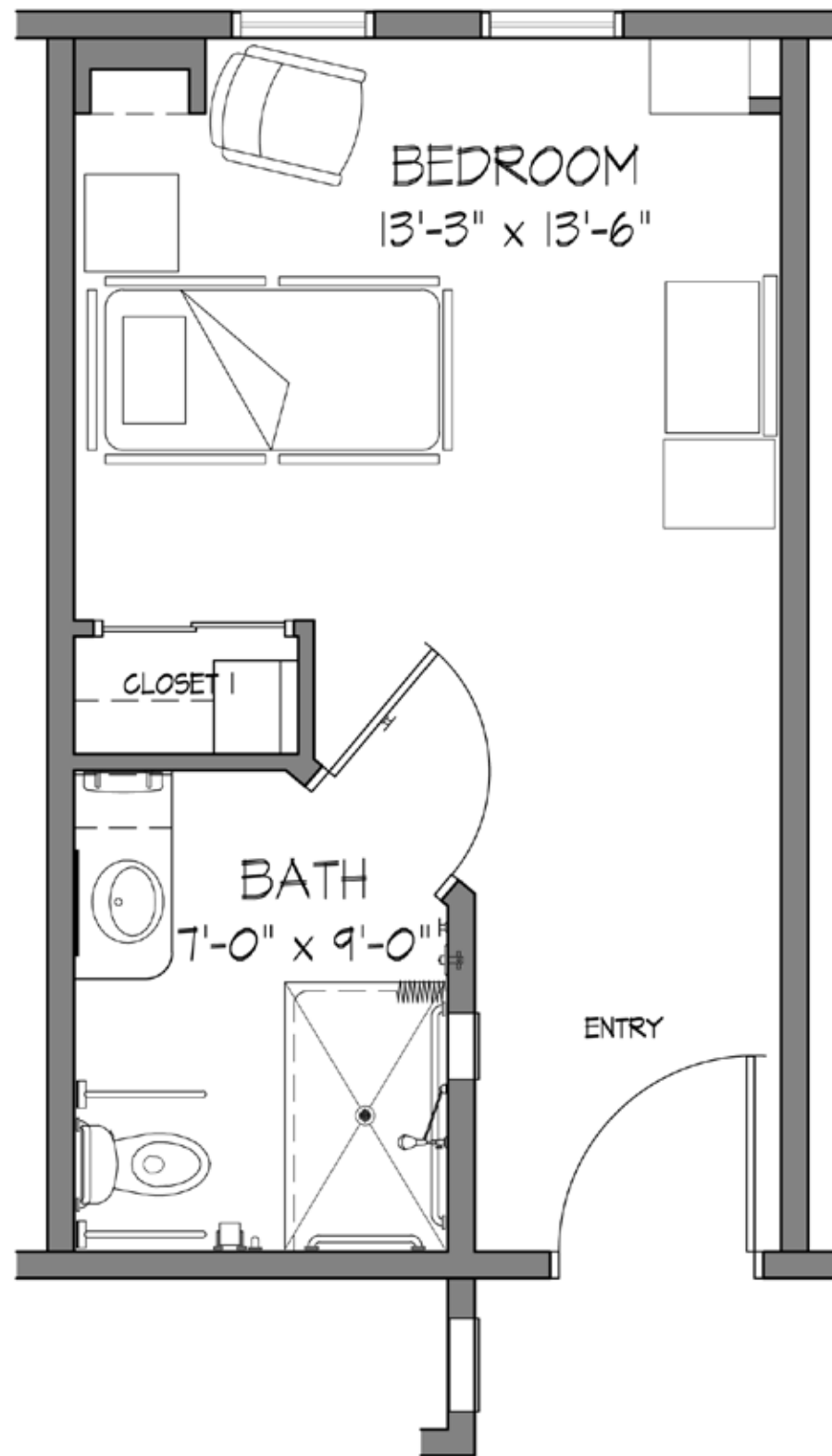
Our private pay rates (as opposed to our insurance or skilled rates) are as follows:

**Private Room**

Daily Rate of \$383

**Semi-Private Suite, per person**

Daily Rate of \$304



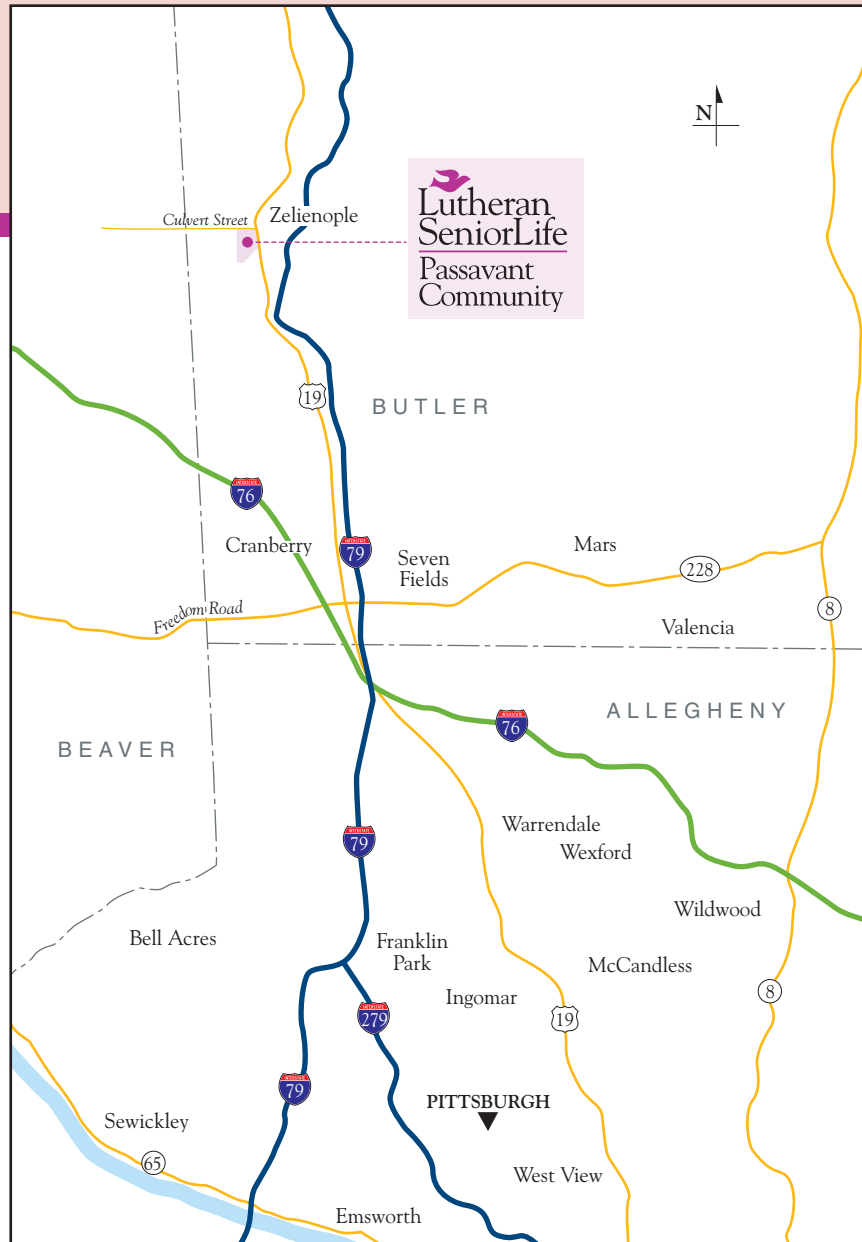
*At Passavant Community, residents' voices are heard and important in making decisions about their daily life.*



*Pricing effective July 1, 2015*



# Please come for a visit!



## Live an *Abundant Life*®

  
**Lutheran  
SeniorLife**  
Passavant  
Community

105 Burgess Drive • Zelienople, Pennsylvania 16063  
Phone: 724-452-5400 / Fax: 724-453-5400

[www.lutheranseniorlife.org](http://www.lutheranseniorlife.org)



Like us on  
Facebook

